

DEPARTMENT OF THE ARMY TECHNICAL MANUAL

ORGANIZATIONAL, DIRECT AND GENERAL SUPPORT,
AND DEPOT MAINTENANCE REPAIR PARTS
AND SPECIAL TOOLS LIST

PUMP, RECIPROCATING: DIAPHRAGM; GASOLINE DRIVEN
WHEEL MOUNTED, RUBBER TIRES; 4 IN.; 100 GPM
AT 10 FT SUSTRON LIFT
(RICE PUMP AND MACHINE CO. MODEL 41)-327)
SERIAL NUMBER RANGE 1120 THROUGH 1245
LESS MIL STD ENGINE
FSN 4320-829-8434

This copy is a reprint which includes
current pages from Change 1.

HEADQUARTERS, DEPARTMENT OF THE ARMY

SEPTEMBER 1968

CHANGE }
NO, 1 }

HEADQUARTERS
DEPARTMENT OF THE ARMY
WASHINGTON, D.C., 24 October 1986

Organizational, Direct and General Support,
and Depot Maintenance Repair Parts
and Special Tools List

PUMP, RECIPROCATING: DIAPHRAGM; GASOLINE DRIVEN
WHEEL MOUNTED, RUBBER TIRES; 4 IN.; 100 GPM
AT 10 FT SUCTION LIFT
(RICE PUMP AND MACHINE CO. MODEL 4D-327)
SERIAL NUMBER RANGE 1120 THROUGH 1245
LESS MIL STD ENGINE
FSN 4320-829-8434

TM 5-4320-222-25P, dated 19 September 1968, is changed as follows:

Page 8, Figure 1, Item 7. Change SMR code from "PFR" to "PAFHH." Change FSN "2805-714-8553" to NSN "2805-01-169-1100". Change Reference No. from "2A016-2" to "2A016-4".

By Order of the Secretary of the Army:

JOHN A. WICKHAM, JR.
General, United States Army
Chief of Staff

Official:

R. L. DILWORTH
Brigadier General, United States Army
The Adjutant General

DISTRIBUTION:

To be distributed in accordance with DA FORM 12-25A, Organizational, Direct and General Support Maintenance requirements for Pump, Reciprocating, Diaphragm, Gas Driven, Wheel Mounted, 100 GPM, 10 FT Lift, 4 IN (4D-327) (TM 5-4320-222 Series)

**ORGANIZATIONAL, DIRECT AND GENERAL SUPPORT, AND DEPOT
MAINTENANCE REPAIR PARTS AND SPECIAL TOOLS LISTS**

**PUMP, RECIPROCATING: DIAPHRAGM; GASOLINE
DRIVEN; WHEEL MOUNTED, RUBBER TIRES; 4 IN.; 100GPM
AT 10 FT SUCTION LIFT
(RICE PUMP AND MACHINE CO. MODEL 4D-327)
SERIAL NUMBER RANGE 1120 THROUGH 1245
LESS MIL STD ENGINE
FSN 4320-829-8434
Current as of 18 April 1968**

		Paragraph	Page
SECTION I.	INTRODUCTION		
	Scope	1	iii
	General	2	iii
	Explanation of columns	3	iii
	Special information	4	v
	How to locate repair parts	5	v
	Abbreviations	6	vi
	Federal supply codes for manufacturers	7	vi
	Report of equipment publication improvements	8	vi
II.	PRESCRIBED LOAD ALLOWANCE		vii
III.	SPECIAL TOOLS, TEST AND SUPPORT EQUIPMENT FOR ORGANIZATIONAL MAINTENANCE (NOT APPLICABLE)		
IV.	REPAIR PARTS FOR ORGANIZATIONAL MAINTENANCE		
Group 02.	Clutch		
	0200 Clutch assembly		1
03.	Fuel System		
	0306 Tanks, lines, fittings		1
11.	Rear Axle		
	1101 Housings, beam, housing cover, plugs, seals, etc.		2
13.	Wheels and Tracks		
	1311 Wheel assembly		3
15.	Frame, Towing Attachments, and Drawbars		
	1501 Frame assembly		3
	1507 Landing gear, leveling Jacks		3
22.	Body Chassis or Hull, and Accessory Items		
	2210 Data plates and instruction holders		4
55.	Pumps (Exclude Engine and Special Pumps)		
	5500 Pump assembly		4
	5505 Suction and/or discharge assembly		4
	5508 Lubricators		7
95.	General Use Standardized Parts		
	9501 Bulk material		7

*This publication supersedes TM 5-4320-222-25P 24 October 1961, C1 22 March 1962 and C2, 29 January 1964

	Page
SECTION V.	REPAIR PARTS FOR DS, GS, AND DEPOT MAINTENANCE
Group 01.	Engine
	0100 Engine assembly 8
02.	Clutch
	0200 Clutch assembly 9
03.	Fuel System
	0306 Tanks, lines, fittings 9
11.	Rear Axle
	1101 Housing, beam, housing covers, plug, seals, etc. 10
13.	Wheels
	1311 Wheel assembly 11
15.	Frame, Towing Attachments, and Drawbars
	1501 Frame assembly 11
	1507 Landing gear, leveling jacks 12
22.	Body Chassis or Hull, and Accessory Items
	2210 Data plates and instruction holders 12
55.	Pumps (Exclude Engine and Special Pumps)
	5500 Pump assembly 12
	5501 Shafts 14
	5502 Rods, bearings, diaphragms 15
	5505 Suction and/or discharge assembly 16
	5507 Pump assembly 19
	5508 Lubricators 19
95.	General Use Standardized Parts
	9501 Bulk material 20
SECTION VI.	SPECIAL TOOLS, TEST AND SUPPORT EQUIPMENT FOR DS, GS, AND DEPOT MAINTENANCE (NOT APPLICABLE)
VII.	FEDERAL STOCK NUMBER AND REFERENCE NUMBER INDEX 30

**SECTION I
INTRODUCTION**

1. Scope

This manual lists repair parts and special tools required for the performance of organization- al, direct support, general support, and depot maintenance of the pump.

2. General

a. The repair parts list is arranged as follows:

(1) Individual parts and major assemblies are listed alphabetically by item name within the numbered functional groups.

(2) Assembly components and subassemblies are indented and listed alphabetically by item name under major assemblies.

b. This Repair Parts and Special Tools List is divided into the following sections:

(1) *Prescribed Load Allowance (PLA)- Section II.* A consolidated listing of repair parts quantitatively allocated for initial stock- age at the organizational level. This is a mandatory minimum stockage allowance.

(2) *Special Tools, Test and Support Equipment- Section III.* A list of special tools, test and support equipment authorized for the performance of maintenance at the organizational level (Not applicable).

(3) *Repair Parts-Section IV.* A list of repair parts authorized for the performance of maintenance at the organizational level.

(4) *Repair Parts-Section V.* A list of repair parts authorized for the performance of maintenance at the direct support, general support, and depot level.

(5) *Special Tools, Test and Support Equipment-Section VI.* A list of special tools, test and support equipment authorized for the 1erformance of maintenance at the direct sup-

port, general support, and depot level (Not applicable).

(6) *Federal Stock Number and Reference Number Index-Section VII* A list of Federal stock numbers followed by reference numbers, appearing in all the listings, in ascending alphanumeric sequence cross-referenced to index number.

3. Explanation of Columns

The following provides an explanation of columns in the tabular lists in sections II through VI.

a. *Source, Maintenance, and Recoverability Codes (SMR).*

Note. Common hardware items known to be readily available in Army supply channels will be assigned Maintenance codes only Source codes, Recoverability codes, and Maintenance allowances will not be assigned to this category.

(1) *Source Code.* Indicates the selection status and source for the listed item. Source codes used are:

Code	Explanation
P	Applied to repair parts which are stocked in or supplied from DSA/GSA or Army supply system, and authorized for use at indicated categories.
M	Applied to repair parts which are not procured or stocked but are to be manufactured at Indicated maintenance categories.
A	Applied to assemblies which are not procured or stocked as such but made up of two or more units, each of which carry individual stock numbers and descriptions and are procured and stocked and can be assembled by units at indicated maintenance categories.

Code	Explanation
X	Applied to parts and assemblies which are not procured to stocked, the mortality of which is normally below that of the applicable end item, and the failure of which should result in retirement of the end item from the supply system
X1	Applied to repair parts which are not procured or stocked, the requirement for which will be supplied by use of the next higher assembly or components
X2	Applied to repair parts which are not stocked. The indicated maintenance category requiring such repair parts will attempt to obtain them through cannibalization; if not obtainable through cannibalization, such repair parts will be requisitioned with supporting justification through normal supply channels.
C	Applied to repair parts authorized for local procurements. If not obtainable from local procurement, such repair parts will be requisitioned through normal supply channels with a supporting statement of nonavailability-from local procurement
G	Applied to major assemblies that are procured with PEMA (Procurement Equipment Missile Army) funds for initial issue only to be used as exchange assemblies at I)SU and GSU maintenance level. These assemblies will not be stocked above DSU and GSU level or returned to depot supply level Note. Source code is not shown on common hardware items known to be readily available in Army supply channels and through local procurement. (2) <i>Maintenance Code.</i> Indicates the lowest category of maintenance authorized to install the listed item. The maintenance level codes are:

Code	Explanation
O	Organizational maintenance
F	Direct support maintenance
H	General support maintenance
D	Depot maintenance

(3) *Recoverability Code.* indicates whether unserviceable items should be returned for recovery or salvage. Items not coded are expendable. Recoverability codes are:

Code	Explanation
R	Applied to repair parts and assemblies which are economically repairable at DSU and GSU activities and normally are furnished by supply on an exchange basis

Code	Explanation
T	Applied to high dollar value recoverable repair parts which are subject to special handling and are issued on an exchange basis. Such repair parts normally are repaired or overhauled at depot maintenance activities.
U	Applied to repair parts specifically selected for salvage by reclamation units because of precious metal content, critical materials, high dollar value reusable casings or castings (4) This column also lists, below the SMR code, an index number for each item, in ascending numerical sequence, which is used to locate items in the publication when the Federal stock number and/or reference number is known. b. <i>Federal Stock Number</i> Indicates the Federal stock number for the item. c. <i>Description</i> Indicates the Federal item name and any additional description of the item required. A part number or other reference number is followed by the applicable five-digit Federal supply code for manufacturers in parentheses. d. <i>Unit of Issue.</i> Indicates the unit used as a basis for issue, e.g., ea, pr, ft, yd, etc. e. <i>Quantity Incorporated in Unit Pack.</i> Indicates the actual quantity contained in the unit pack. f. <i>Quantity Incorporated in Unit.</i> Indicates the quantity of the item used in the functional group. g. <i>Fifteen-Day Organizational Maintenance allowances.</i> (1) The allowance columns are divided into four subcolumns. Indicated in each subcolumn is the quantity of items authorized for the number of equipment's supported. Items authorized for use as required but not initial stockage are identified with an asterisk in the allowance column. (2) The quantitative allowances for organizational level of maintenance represents one initial prescribed load for a 15-day period for the number of equipment's supported. Units and organizations - authorized additional prescribed loads will multiply the number of prescribed loads authorized by the quantity of repair parts reflected in the appropriate den-

sity column to obtain the total quantity of re- pair parts authorized.

(3) Organizational units providing maintenance for more than 100 of these equipment's shall determine 'the total quantity of parts required -by converting the equipment quantity to a decimal factor by placing a decimal point before the next to last digit of the number to indicate hundredths, and multiplying the decimal factor by the parts quantity authorized in the 51-10'0 allowance column. Example, authorized allowance for 51-100 equipment's is 12; for 140 equipment's multiply 12 by 1.40 or 16.80 rounded off to 17 parts required.

(4) Subsequent changes to allowances will be limited as follows: No change in the range of items is authorized. If additional items are considered necessary, recommenda- tion should be forwarded to U. S. Army Mobility Equipment Command for exception or revision to the allowance list. Revisions to the range of items authorized will be made by this Command based upon engineering experience, demand data, or TAE)RS information

h. Thirty-Day DS/GS Maintenance Allowances.

(1) The allowance columns are divided into three subcolumns. Indicated in each sub- column is the quantity of items authorized for the number of equipment's supported. Items authorized for use as required but not for initial s'tockage are identified with an asterisk in the allowance column.

(2) The quantitative allowances for DS/ GS levels of maintenance will 'represent initial stockage for a 30-day .period for the number of equipment's supported.

(3) Determination of the total quantity of parts required for maintenance of more than 100 of these equipment's can be accomplished by converting 'the equipment quantity to a decimal factor by placing a decimal point before the next to last digit of the number to indicate hundredths, and multiplying the decimal factor by the parts quantity authorized In the 51-100 allowance column. Example, authorized allowance for 51-100 equipment's is 40; for 150 equipment's multiply 40 by 1.50 or 60 parts required.

i. One-Year Allowances Per 100 Equip- ments/Contingency Planning Purposes. Indicates the quantity required for distribution and contingency planning purposes. The range of Items indicates total quantities of all authorized items required to provide for adequate support .of 100 equipment's for one year.

j. Depot Maintenance Allowance Per 100 Equipment's. Indicates the quantity authorized for depot maintenance of 100 equipment's. Items authorized for use but not for initial stockage are identified with an asterisk in the allowance column.

k. Illustration.

(1) *Figure Number.* Indicates the figure number of the illustration in which the item is shown.

(2) *Item Number.* Indicates the callout number used to reference the item In the illustration.

4. Special Information

a. Repair parts mortality has been based on 1, 000 hours of operation per year.

b. Parts which require manufacture or assembly at a category higher than that authorized for installation will indicate In the source column the higher category.

c. The following publications pertain to the pump and , its components: For repair parts and special tools , for the MIL STD Engine 2A016-II refer to TM 5-2805-206-24P

5. How to Locate Repair Parts

a. W-hen Federal stock number or reference number is unknown:

(1) First. Using the table of contents, determine the functional group within which the repair part belongs.

(2) Second. Find the illustration covering the functional group to which the repair part belongs.

(3) Third. Identify the repair part on the illustration, and note the illustration figure' and item number of the repair part.

(4) Fourth. Using the repair parts listing, find the functional group to which the repair part belongs and locate the illustration figure and Item number noted on the illustration

b. Federal stock number or reference number is known:

(1) *First.* Using the index of Federal stock numbers and reference numbers, find the pertinent Federal stock number or reference number. This index is in ascending alpha-numeric sequence cross-referenced to an index number.

(2) *Second.* Using the repair part listing, find the index number referenced in the index of Federal stock numbers and reference numbers.

6. Abbreviations

- ea ----- each
- ft ----- foot (feet)
- grp ----- group
- id ----- inside diameter
- in. ----- inch (es)
- mtg ----- mounting
- No ----- Number
- thk ----- thick (ness)

7. Federal Supply Codes for Manufacturers

- | Code | Manufacturer |
|-----------|--|
| 08645 --- | Briggs and Stratton Corp. |
| 24161 --- | Gates Rubber Co. |
| 60038 --- | Timken Roller Bearing Co. |
| 76680 --- | National Seal Division of
Federal-Mogul Corp. |
| 80885 --- | Oil Rite Corp. |
| 81336 --- | Chief of Engineers |
| 81673 --- | Rice Pump and Machine Co. |
| 87134 --- | Mercury Clutch Div. of Auto-
matic Steel Products, Inc. |

8. Report of Equipment Publication Improvements

Report of errors, omissions, and recommendations for improving this publication by the individual user is encouraged. Reports should be submitted on DA Form 2028 (Recommended Changes to DA Publications) and forwarded direct to Commanding General, U. S. Army Mobility Equipment Command, ATTN: AMSME-MPP, 4300 Goodfellow Boulevard, St. Louis, Mo. 63120.

SECTION II

PRESCRIBED LOAD ALLOWANCE

(1) FEDERAL STOCK NUMBER	(2) DESCRIPTION	(3) Qty inc in unit pack	(4) 15-DAY ORG. MAINT. ALLOWANCE			
			(a) 1-5	(b) 6-20	(c) 21-50	(d) 51-100
4320-733-7861	Group 02- CLUTCH 0200- CLUTCH ASSEMBLY LINING, FRICTION		*	*	*	2
4320-733-7860	GROUP 55- PUMPS 550- SUCTION AND/OR DISCHARGE ASSEMBLY GASKET: check valve, discharge		*	*	*	2
4320-733-7860	GASKET. check valve, intake		*	*	*	2
4320-733-7863	GASKET: accumulator mtg		*	*	*	2
4320-733-7863	GASKET: discharge valve clean out cover		*	*	*	2
4320-733-7864	GASKET: suction valve body to pump		*	*	*	2
4320-733-7864	GASKET: valve body to seat and extension		*	*	*	2
4320-891-5438	GASKET: pipe adapter		*	*	*	2
4320-891-5438	GASKET: suction pipe adapter		*	*	*	2
4720-289-5213	GROUP 95- ENERAL USE STANDARDIZED PARTS 9501- BULK MATERIAL HOSE, RUBBER		*	*	*	2
	vii					

SECTION IV

TM 5-4320-222-25P

(1) SMR CODE INDEX NO.	(2) FEDERAL STOCK NUMBER	(3) DESCRIPTION REFERENCE NO. & MFR CODE	(4) UNIT OF ISSUE	(5) QTY INC IN UNIT	(6) 15-DAY ORGANIZATIONAL MAINTENANCE ALW				(7) ILLUSTRATION	
					(a) 1-5	(b) 6-20	(c) 21-50	(d) 51-100	(a) FIGURE NO.	(B) ITEM NO.
					00001 00002		SECTION IV - REPAIR PARTS FOR ORGANIZATIONAL MAINTENANCE GROUP 02 - CLUTCH 0200 - CLUTCH ASSEMBLY			
X2 0 R 00003	4320-984-4748	COUPLING, CLUTCH: pump operating XA2629 (87134)	EA	1				5	15	
X2 0 00004	2520-852-5886	HOUSING, CLUTCH COUPLING 4043-3 (87134)	EA	1				1	17	
0 00005	5315-043-1787	KEY, WOODRUFF: clutch coupling to shaft, No. 61	EA	1	*	*	*	*	1	19
P 0 00006	4320-733-7861	LINING, FRICTION A3789 (87134)	EA	4	*	*	*	2	1	12
X2 0 00007	4320-999-5998	RETAINER, CLUTCH SEMENT 4746 (87134)	EA	1				1	14	
P 0 00008	5305-728-6274	SETSCREW: clutch coupling to shaft	EA	1	*	*	*	1	13	
P 0 00009	5305-013-9325	SETSCREW: clutch coupling to shaft	EA	1	*	*	*	*	1	16
X2 0 00010	4320-734-5101	SPRING, CLUTCH SEiH2T A3803 (87134)	EA	1				1	15	
00011		GROUP 03 - FUEL SYSTEM								
00012		0306 - TANKS, LINES, FITTINGS								
0 00013	5306-225-8497	BOLT, MACHINE: tank bracket to motor	EA	4	*	*	*	*	2	10
M 0 00014	4720-733-7862	HOSE ASSEMBLY FUEL: tank to fuel pumpEA128 56-009 (81673; MANUFACTURE FROM:								
P 0 00015	4730-202-9381	ADAPTER, STRAIGHT, PIPE TO HOSE	EA	2	*	*	*	*	2	10
P 0 00016	4720-289-5213	HOSE, RUBBERFTSEEGRP 9501 (12 in. required)								

SECTION IV

TM 5-4320-222-25P

(1) SMR CODE <u>INDEX NO.</u>	(2) FEDERAL STOCK NUMBER	(3) DESCRIPTION REFERENCE NO & MFR CODE	(4) UNIT OF MEAS	(5) QTY INC IN UNIT	(6) 15-DAY ORGANIZATIONAL MAINTENANCE ALW				(7) ILLUSTRATION	
					(a) 1-5	(b) 6-20	(c) 21-50	(d) 51-100	(a) FIGURE NO.	(B) ITEM NO.
					X2 0 00017		TANK ASSEMBLY, GASOLINE 173-004 (81673)	EA	1	
X2 0 00018		BRACKET, TANK MTG 25-088 (81673)	EA	1					2	11
P 0 00019	2910-293-5923	CAP, FUEL TANK 93011 (08645)	EA	1	*	*	*	*	2	7
P 0 0002C 0	4730-287-1649	ELBOW, PIPE: fuel tank strainer line	EA	1	*	*	*	*	2	17
00021 X2 0 00022	5310-619-3555	NUT, PLAIN, HEXAGON: fuel tank mtg strap	EA	2	*	*	*	*	2	1
0 00023 X2 0 00024	5303-069-8495	PLUG, PIPE: fuel tank drain 26-019 (81673)	EA	1					2	16
0 00023 X2 0 00024	5303-069-8495	SCREW, CAP, HXCAGON HEAD: fuel tank mtg strap	EA	2	*	*	*	*	2	4
X2 0 00025		STRAINER, FUEL TANK 293026 (08645)	EA	1					2	6
X2 0 00026		STRAP, FUEL TANK 72-004 (81673)	EA	2					2	3
X2 0 00026		TANK, GASOLINE 294002-4 (08645)	EA	1					2	5
0 00027 0	5310-010-3319	WASHER, LOCK: fuel tank mtg strap	EA	2	*	*	*	*	2	2
00028 00029 00030	5310-012-0214	WASHER, LOCK: tank bracket to motor	EA	4	*	*	*	*	2	9
X2 0 00031		GROUP 11 - REAR AXLE 1101 - HOUSING, BEAM, HOUSING COVER, PLUGS, SEALS, ECT. AXLE: pump supportEA137 11-034 (81673)	EA	2						
0 00032 X2 0 00033 X2 0 00034	5306-225-9081	BOLT, MACHINE: axle bracket mtg	EA	4	*	*	*	*	3	10
		BRACKET: axle mtg 25-084 (81673)	EA	2					3	6
		SLEEVE, AXLE: wheel spacerEA234 9-057 (81673)								

SECTION IV

TM 5-4320-222-25P

(1) SMR CODE INDEX NO.	(2) FEDERAL STOCK NUMBER	(3) DESCRIPTION REFERENCE NO. & MFR CODE	(4) UNIT OF MEAS	(5) QTY INC IN UNIT	(6) 15-DAY ORGANIZATIONAL MAINTENANCE ALW				(7) ILLUSTRATION	
					(a) 1-5	(b) 6-20	(c) 21-50	(d) 51-100	(a) FIGURE NO.	(B) ITEM NO.
					X2 0 00071		BODY, VALVE: discharge 5-060 (81673)	EA	1	
X2 0 00072		COVER, DISCHARGE VALVE: clean out 6-054 (81673)	EA	1					7	9
X2 0 00073		EXTENSION, VALVE 69-018 (81673)	EA	1					7	22
P 0 00074	4320-733-7863	GASKET: accumulator mtg 24-099 (81673)	EA	1	*	*	*	2	8	9
P 0 00075	4320-733-7860	GASKET: check valve, discharge 24-072 (81673)	EA	1	*	*	*	2	7	16
P 0 00076	4320-733-7860	GASKET: check valve, intake 24-072 (81673)	EA	1	*	*	*	2	8	14
P 0 00077	4320-733-7863	GASKET: discharge valve clean out cover 24-099 (81673)	EA	1	*	*	*	2	7	8
P 0 00078	4320-891-5438	GASKET: pipe adapter 24-069 (81673)	EA	1	*	*	*	2	7	6
P 0 00079	4320-891-5438	GASKET: suction pipe adapter 24-069 (81673)	EA	1	*	*	*	2	8	5
P 0 00080	4320-733-7864	GASKET: suction valve body to pump 24-073 (81673)	EA	1	*	*	*	2	8	17
P 0 00081	4320-733-7864	GASKET: valve body to seat and extension 24-073 (81673)	EA	2	*	*	*	2	7	19
0 00082	4730-256-7130	NIPPLE, PIPE: discharge valve	EA	1	*	*	*	*	7	1
0 00083	4730-256-7130	NIPPLE, PIPE: suction valve	EA	1	*	*	*	*	8	1
0 00084	5310-682-5756	NUT, PLAIN, HZXAGON: discharge coupling and cover plate mtg	EA	4	*	*	*	*	7	2
0 00085	5310-655-9544	NUT, PLAIN, IEXAGON: discharge valve to pump housing adapter and extension to bowl mtg	EA	8	8	**	**	*	7	12
0 00086	5310-682-5756	NUT, PLAIN, HEXAGON: suction valve adapter and accumulator mtg	EA	4	4	*	*	*	8	2
0 00087	5310-655-9544	NUT, PLAIN, HEXAGON: suction valve mtg	EA	4	4	*	*	*	8	19

SECTION IV

TM 5-4320-222-25P

(1) SMR CODE <u>INDEX</u> NO.	(2) FEDERAL STOCK NUMBER	(3) DESCRIPTION REFERENCE NO. & MFR CODE	(4) UNIT OF MEAS	(5) QTY INC IN UNIT	(6) 15-DAY ORGANIZATIONAL MAINTENANCE ALW				(7) ILLUSTRATION	
					(a) 1-5	(b) 6-20	(c) 21-50	(d) 51-100	(a) FIGURE NO.	(B) ITEM NO.
					X2 0 00105		WEIGHT, DIAPHRAGM: discharge valve, large 3-017 (81673)	EA	1	
X2 0 00106		WEIGHT, DIAPHRAGM: discharge valve, small 3-016 (81673)	EA	1					7	17
X2 0 00107		WEIGHT, DIAPHRAGM: large 3-017 (81673)	EA	1					8	13
X2 0 00108		WEIGHT, DIAPHRAGM: small 3-016 (81673)	EA	1					8	15
00109		5508 - LUBRICATORS								
P 0 00110	4730-287-1649	ELBOW, PIPE: case oil filler	EA	1	*	*	*	*	6	17
0 00111	4730-196-2054	NIPPLE, PIPE: case oil filler	EA	1	*	*	*	*	6	16
X2 0 00112		OILER: cam drive 49-036 (80885)	EA	1					9	1
X2 0 00113 00114	4730-187-4200	PLUG, PIPE: case oil filler and lever	EA	2					6	15
00115		GROUP 95 - GENERAL USE STANDARDIZED PARTS 9501 - BULK MATERIAL								
P 0 00116	4720-289-5213	HOSE, RUBBER: 1/4 in. id								
P 0 00117	4710-278-5380	PIPE, STEEL: 3/8 in. id								
7										

SECTION V

TM 5-4320-222-25P

(1) SMR CODE INDEX NO.	(2) FEDERAL STOCK NUMBER	(3) DESCRIPTION REFERENCE NO. & MFR CODE	(4) UNIT OF MEAS	(5) QTY INC IN UNIT	(6) 30 DAYS DS MAINT ALLOWANCE			(7) 30 DAYS GS MAINT ALLOWANCE			(8) 1-YEAR ALW PER 100 EQUIP CNTGCTY	(9) DEPOT MAINT ALW PER 100 EQUIP	(10) ILLUSTRATION	
					(a)	(b)	(c)	(a)	(b)	(c)			(a) FIGURE NO.	(b) ITEM NO.
					1-20	21-50	51-100	1-20	21-50	51-100				
P 0 00152	2910-293-5923	CAP, FUEL TANK 293011 (08645)	EA	1	*	*	2	*	*	2	10	10	2	7
P 0 00153	4730-287-1649	ELBOW, PIPE: fuel tank strainer line	EA	1	*	*	*	*	*	*	2	10	2	17
0 00154	5310-619-3555	NUT, PLAIN, HEXAGON: fuel tank Rtg strap	EA	2	*	*	*	*	*	*	*	*	2	1
X2 0 0155		PLUG, PIPE: fuel tank drain 26-109 (81673)	EA	1									2	16
0 0156	5305-069-8495	SCREW, CAP, HEXAGON HEAD: fuel tank utg strap	EA	2	*	*	*	*	*	*	*	*	2	4
X2 0 00157		STRAINER, FUEL TANKEA126 293026 (08645)												
X2 0 00158		STRAP, FUEL TANKEA223 72-004 (81673)												
X2 0 00159		TANK, GASOLINEEA125 294002-4 (08645)												
0 00160	5310-010-3319	WASHER, LOCK: fuel tank mtg strap	EA	2	*	*	*	*	*	*	*	*	2	2
0 00161	5310-012-0214	WASHER, LOCK: tank bracket to motor	EA	4	*	*	*	*	*	*	*	*	2	9
00162		GROUP 11 - REAR AXLE												
00163		1101 - HOUSING, BEAMN, HOUSING COVERS, PLUGS, SEALS, ETC.												
X2 0 00164		AXLE: pump support 11-034 (81673)	EA	1									3	7
0 00165	5306-225-9081	BOLT, MACHINE: axle bracket mtg	EA	4	*	*	*	*	*	*	*	*	3	10
X2 0 00166		BRACKET: axle mtg 25-084 (81673)	EA	2									3	6
X2 0 00167		SLEEVE, AXLE: wheel spacer 9-057 (81673)	EA	2									3	4
0 00168	5310-012-0379	WASHER, LOCK: axle bracket mtg	EA	4	*	*	*	*	*	*	*	*	3	9
				10										

SECTION V

TM 5-4320-222-25P

(1) SMR CODE INDEX NO.	(2) FEDERAL STOCK NUMBER	(3) DESCRIPTION REFERENCE NUMBER & MFR CODE USABLE ON CODE		(4) UNIT OF MEAS	(5) QTY INC IN UNIT	(6) 30 DAYS DS MAINT ALLOWANCE			(7) 30 DAYS GS MAINT ALLOWANCE			(8) 1-YEAR ALW PER 100 EQUIP CNTGCY	(9) DEPOT MAINT ALW PER 100 EQUIP	(10) ILLUSTRATION		
						(a)	(b)	(c)	(a)	(b)	(c)			(a) FIGURE NO.	(b) ITEM NO.	
						1-20	21-50	51-100	1-20	21-50	51-100					
00169		GROUP 13 - WHEELS														
00170		1311 - WHEEL ASSEMBLY														
X2 0 00171	5315-822-9460	CAP, HUB: rear wheel 71-007 (81673)		EA	2									3	2	
X2 0 00172		PIN, SPRING: hub cap to axle		EA	2									3	1	
X2 0 00173		WHEEL: rear 17-033 (81673)		EA	2									3	3	
00174		GROUP 15 - FRAME, TOWING ATTACHMENTS, AND DRAWBARS														
00175		1501 - FRAME ASSEMBLY														
X2 0 00176		CHAIN: handle lock 37-065 (81673)		EA	2									3	16	
X2 F 00177		FRAME, PUMP MOUNTING 10-045 (81673)		EA	1									3	18	
X2 0 00178		HANDLE, TOWING 14-025 (81673)		EA	1									3	17	
X2 F 00179		HOLD DOWN: front 125-021 (81673)		EA	2									3	13	
X2 F 00180		HOLD DOWN: rear 125-020 (81673)		EA	2									3	5	
F 00181	5310-655-9544	NUT, PLAIN, HEXAGON: pump hold down		EA	4	*	*	*	*	*	*	*	*	3	21	
0 00182	5315-187-9538	PIN, COTTER: sleeve handle		EA	4	*	*	*	*	*	*	*	*	3	15	
F 00183	5305-269-3217	SCREW, CAP, HEXAGON HEAD: frame to bowl mtg		EA	4	*	*	*	*	*	*	*	*	3	20	
X2 F 00184		SCREW, CAP, HEXAGON HEAD: pump hold down and frame to bowl mtgEA338 44-010 (81673)														
F 00185	5305-071-2241	SCREW, CAP, HEXAGON HEAD: sleeve handle mtg		EA	4	*	*	*	*	*	*	*	*	3	11	
					11											

SECTION V

TM 5-4320-222-25P

(1) SMR CODE INDEX NO.	(2) FEDERAL STOCK NUMBER	(3) DESCRIPTION REFERENCE NUMBER & MFR CODE USABLE ON CODE		(4) UNIT OF MEAS	(5) QTY INC IN UNIT	(6) 30 DAYS DS MAINT ALLOWANCE			(7) 30 DAYS GS MAINT ALLOWANCE			(8) 1-YEAR ALW PER 100 EQUIP CNTGCTY	(9) DEPOT MAINT ALW PER 100 EQUIP	(10) ILLUSTRATION	
						(a)	(b)	(c)	(a)	(b)	(c)			(a)	(b)
						1-20	21-50	51-100	1-20	21-50	51-100			FIGURE NO.	ITEM NO.
X2 F 00204		BOLT, MACHINE: bearing cover to gear case and gear case to frame 44-014 (81673)	EA	11										5	1
X2 F 00205		BOLT, MACHINE: gear cover and cam gear shafts cover mtg 44-014 (81673)	EA	13										6	1
X2 F 00206		BOWL, PIPEA143 34-063 (81673)													
X2 F 00207		CASE, GEAR: pump drive and cam 55-012 (81673)	EA	1										5	8
X2 F 00208		COVER, BEARING: cam gear shaft, closed 6-028 (81673)	EA	1										6	18
X2 F 00209		COVER, BEARING: cam gear shaft, open 6-029 (81673)	EA	1										6	10
X2 F 00210		COVER, BEARING: worm gear, closed 6-027 (81673)	EA	1										5	3
X2 F 00211		COVER, BEARING: worm gear, open 6-023 (81673)	EA	1										5	16
X2 F 00212		COVER, GEAR CASE 6-022 (81673)	EA	1										6	3
0 00213	4730-278-4285	ELBOW, PIPE: pump bowl priming elbow	EA	1	*	*	*	*	*	*	*	*	*	4	4
P F 00214	4320-840-3992	GASKET: bearing cover, 0.005 in. Thk 24-062 (81673)	EA	2	*	*	2	*	*	2	6	200		5	4
X2 F 00215	4320-840-3991	GASKET: cam gear shaft bearing cover, 0.010 in. Thk (as required) 24-077 (81673)	EA											6	12
P F 00216	4320-840-3990	GASKET: cam gear shaft cover, 0.005 in. Thk 24-066 (81673)	EA	2	*	*	2	*	*	2	6	200		6	11
P F 00217	4320-733-7865	GASKET: gear cover to housing 24-061 (81673)	EA	1	*	2	2	*	2	2	20	100		6	4
				13											

SECTION V

TM 5-4320-222-25P

(1) SMR CODE INDEX NO.	(2) FEDERAL STOCK NUMBER	(3) DESCRIPTION REFERENCE NUMBER & MFR CODE USABLE ON CODE		(4) UNIT OF MEAS	(5) QTY INC IN UNIT	(6) 30 DAYS DS MAINT ALLOWANCE			(7) 30 DAYS GS MAINT ALLOWANCE			(8) 1-YEAR ALW PER 100 EQUIP CNTGCV	(9) DEPOT MAINT ALW PER 100 EQUIP	(10) ILLUSTRATION	
						(a)	(b)	(c)	(a)	(b)	(c)			(a) FIGURE NO.	(b) ITEM NO.
						1-20	21-50	51-100	1-20	21-50	51-100				
X2 F 00234		RING, CAM HOUSING 60-037 (S1673)	EA	1										9	7
F 00235	5305-068-050	SCREW, CAP, HEXAGON HEAD: cam ring to cam housing	EA	4	*	*	*	*	*	*	*	*	*	9	9
F F	305-010-2601	SETSCREW: diaphragm cam to worm gear shaft	EA	1	*	*	*	*	*	*	2	12	9	5	
F 00237	5310-010-3319	WASHFR, LOCK: cam ring to cam housing	EA	4	*	*	*	*	*	*	*	*	9	8	
F F 00238	3110-100-0728	CONE- AND .ROLLERS, T.APERED .ROLLER BEARING: cam gear shaft, closed and open end 2580 (60038)	EA	2	*	*	2	*	*	2	6	20	6	5	
F F 00239	3110-100-0355	CUP, TAPERED ROLLER BEARING: cam gear shaft, closed and open endEA2*2 *620614 2523 (6GC38)	EA	1											
X2 F 00240		GEAR, CAM 39-014 (81673)	EA	1										6	8
X2 F 00241		KEY, WOODRUFF: cam gear and cam, No. D 36-017 (81673)	EA	2										6	7
P F 00242	5330-178-3806	SEAL, PLAIN CAS.-SD: cam gear shaft 50165 (76680)	EA	1	*	*	*	*	*	*	*	*	*	6	13
P F 00243	5305--24-6809	SETSCREW: gear to shaft	EA	2	*	*	*	*	*	*	2	20	6	9	
X2 F 00244	4320-999-5538	SHAFT, CAM: diaphragm drive 54-042 (81673)	EA	1										6	6
00245		5502 - RODS, BEARINGS DIAPHRAGYCS													
X2 F 00246		CONNECTING .ROD ASSEMBLY 147-001 (81673)	EA	1										9	11
P F 00247	4320-593-2480	DIAPFRAG, PUHIP 3E (24161)	EA	1	*	2	2	*	2	2	15	100	9	12	
F 00248	5310-045-1419	NUT, PLAIN, H:EXAGOS: connecting rod lock	EA	1	*	*	*	*	*	*	*	*	9	21	
F 00249	5310-655-9544	NFT, PLAIN, Hr-AGMN: diaphragm mtg stud	EA	4	*	*	*	*	*	*	*	*	9	17	
				15											

SECTION V

TM 5-4320-222-25P

(1) SMR CODE INDEX NO.	(2) FEDERAL STOCK NUMBER	(3) DESCRIPTION REFERENCE NUMBER & MFR CODE USABLE ON CODE		(4) UNIT OF MEAS	(5) QTY INC IN UNIT	(6) 30 DAYS DS MAINT ALLOWANCE			(7) 30 DAYS GS MAINT ALLOWANCE			(8) 1-YEAR ALW PER 100 EQUIP CNTGCV	(9) DEPOT MAINT ALW PER 100 EQUIP	(10) ILLUSTRATION	
						(a)	(b)	(c)	(a)	(b)	(c)			(a)	(b)
						1-20	21-50	51-100	1-20	21-50	51-100			FIGURE NO.	ITEM NO.
X2 F 00250		PLATE, CONNECTING: diaphragm clamping 51-084 (81673)	EA	1										9	15
X2 F 00251		PLATE, DIAPHRAGM: bottom 51-085 (81673)	EA	1										9	13
X2 F 00252		SPACER, SLEEVE: connecting rod 81-013 (81673)	EA	1										9	18
F 00253	5307-268-5755	STUD, PLAIN: diaphragm mtg	EA	4	*	*	*	*	*	*	*	*	*	9	14
X2 F 00254		WASHER, BEVELED: connecting rod 15-045 (81673)	EA	1										9	19
F 00255	5310-010-3327	WASHER, LOCK: connecting rod	EA	1	*	*	*	*	*	*	*	*	*	9	20
F 00256	5310-261-7340	WASHER, LOCK: diaphragm mtg	EA	4	*	*	*	*	*	*	*	*	*	9	16
		5505 - SUCTION AND/OR DISCHARGE ASSEMBLY													
X2 0 00258		ACCUMULATOR: suction valve 34-060 (81673)	EA	1										8	11
X2 0 00259		ADAPTER, PIPE: discharge valve 67-022 (81673)	EA	1										7	5
X2 0 00260		ADAPTER, PIPE: suction pipe 67-022 (81673)	EA	1										8	4
X2 0 00261		BODY, VALVE: accumulator suction valve 5-060 (81673)	EA	1										8	7
X2 0 00262		BODY, VALVE: discharge 5-060 (81673)	EA	1										7	10
X2 0 00263		COVER, DISCHARGE VALVE: clean out 6-054 (81673)	EA	1										7	9
X2 0 00264		EXTENSION, VALVE 69-018 (81673)	EA	1										7	22
P 0 00265	4320-733-7863	GASKET: accumulator mtg 24-099 (81673)	EA	1	*	2	2	*	2	2	20	100		8	9
				16											

SECTION V

TM 5-4320-222-25P

(1) SMR CODE	(2) FEDERAL STOCK NUMBER	(3) DESCRIPTION REFERENCE NUMBER & MFR CODE USABLE ON CODE		(4) UNIT OF MEAS	(5) QTY INC IN UNIT	(6) 30 DAYS DS MAINT ALLOWANCE			(7) 30 DAYS GS MAINT ALLOWANCE			(8) 1-YEAR ALW PER 100 EQUIP CNTGCTY	(9) DEPOT MAINT ALW PER 100 EQUIP	(10) ILLUSTRATION	
						(a)	(b)	(c)	(a)	(b)	(c)			(a)	(b)
						1-20	21-50	51-100	1-20	21-50	51-100			FIGURE NO.	ITEM NO.
P 0 00266	4320-733-7860	GASKET: check valve, discharge 24-072 (81673)		EA	1	*	2	2	*	2	2	20	100	7	16
P 0 00267	4320-733-7860	GASKET: check valve, intake 24-072 (81673)		EA	1	*	2	2	*	2	2	20	100	8	14
P 0 00268	4320-733-7863	GASKET: discharge valve clean out cover 24-099 (81673)		EA	1	*	2	2	*	2	2	20	100	7	8
P 0 00269	4320-891-5438	GASKET: pipe adapter 24-069 (81673)		EA	1	*	2	2	*	2	2	20	100	7	6
P 0 00270	4320-891-5438	GASKET: suction pipe adapter 24-069 (81673)		EA	1	*	2	2	*	2	2	20	100	8	5
P 0 00271	4320-733-7864	GASKET: suction valve body to pump 24-073 (81673)		EA	1	*	2	2	*	2	2	20	100	8	17
P 0 00272	4320-733-7864	GASKET: valve body to seat and extension 24-073 (81673)		EA	2	*	2	2	*	2	2	20	200	7	19
0 00273	4730-256-7130	NIPPLE, PIPE: discharge valve		EA	1	*	*	*	*	*	*	*	*	7	1
0 00274	4730-256-7130	NIPPLE, PIPE: suction valve		EA	1	*	*	*	*	*	*	*	*	8	1
0 00275	5310-682-5756	NUT, PLAIN, HEXAGON: discharge coupling and cover plate mtg		EA	4	*	*	*	*	*	*	*	*	7	2
0 00276	5310-655-9544	NUT, PLAIN, HEXAGON: discharge valve to pump housing adapter and extension to bowl mtg		EA	8	*	*	*	*	*	*	*	*	7	12
0 00277	5310-682-5756	NUT, PLAIN, HEXAGON: suction valve adapter and accumulator mtg		EA	4	*	*	*	*	*	*	*	*	8	2
0 00278	5310-655-9544	NUT, PLAIN, HEXAGON: suction valve mtg		EA	4	*	*	*	*	*	*	*	*	8	19
0 00279	4730-278-3353	PLUG, PIPE: accumulator		EA	1	*	*	*	*	*	*	*	*	8	10
0 00280	5305-068- 0501	SCREW, CAP, HEXAGON HEAD: diaphragm weight		EA	2	*	*	*	*	*	*	*	*	7	13
0 00281	5305-068-0501	SCHRF, CAP, HEXAGON HEAD: weight to diaphragm		EA	2	*	*	*	*	*	*	*	*	8	12
X2 0 00282		SEAT, CHECK VALVE: dischargeEA1718 69-011 (81673)													
					17										

SECTION V

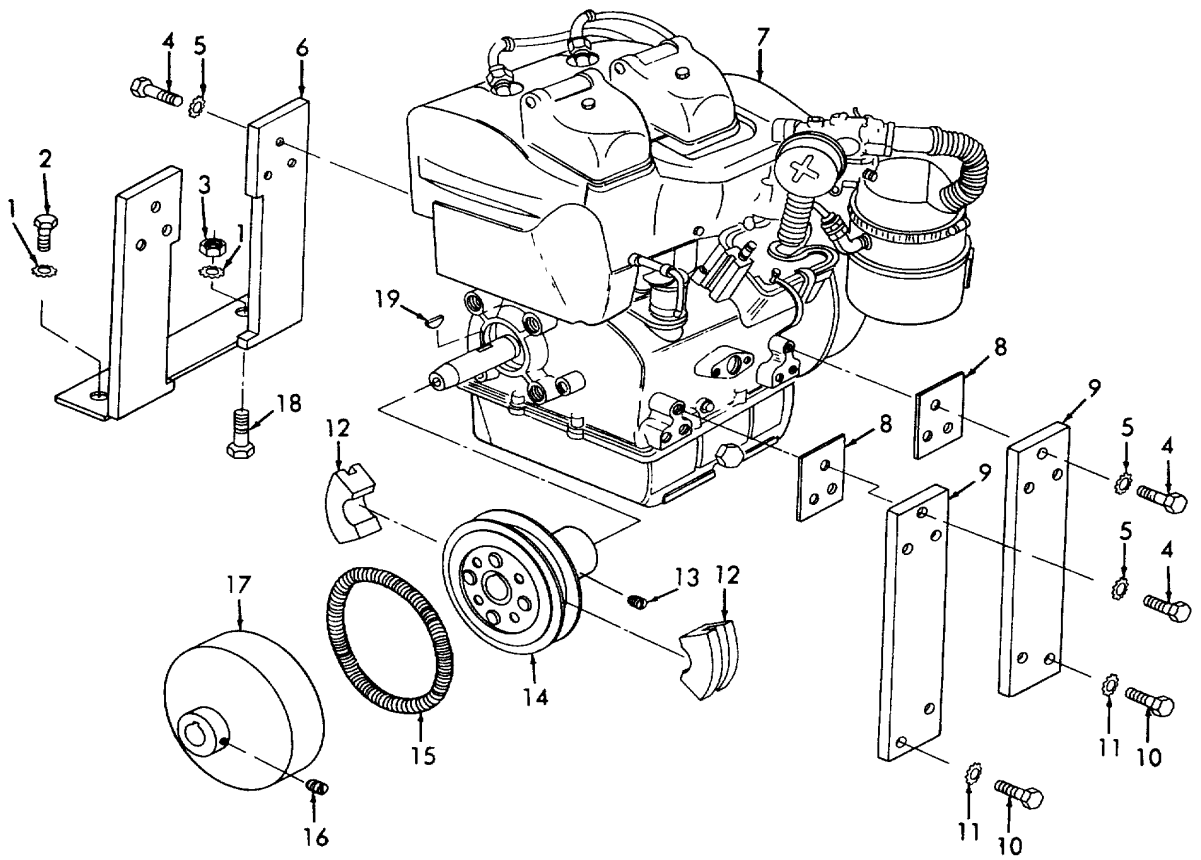
TM 5-4320-222-25P

(1) SMR CODE INDEX NO.	(2) FEDERAL STOCK NUMBER	(3) DESCRIPTION REFERENCE NO. & MFR CODE	(4) UNIT OF MEAS	(5) QTY INC IN UNIT	(6) 30 DAYS DS MAINT ALLOWANCE			(7) 30 DAYS GS MAINT ALLOWANCE			(8) 1-YEAR ALW PER 100 EQUIP CNTGCVY	(9) DEPOT MAINT ALW PER 100 EQUIP	(10) ILLUSTRATION	
					(a)	(b)	(c)	(a)	(b)	(c)			(a)	(b)
					1-20	21-50	51-100	1-20	21-50	51-100			FIGURE NO.	ITEM NO.
X2 0 00283		SEAT, CHECK VALVE: intake 69-011 (81673)	EA	1								8	16	
M 0 00284		SPACER: discharge valve to pump stud MANUFACTURE FROM:	EA	4								7	11	
P 0 00285	4710-278-5380	PIPE, STEELFT (1/2 in. required for each SPACER)					SEE GRP 9501							
0 00286	5307-275-5329	STUD, PLAIN: accumulator to body	EA	1	*	*	*	*	*	*	*	8	8	
0 00287	5307-261-0358	STUD, PLAIN: adapter to suction valve	EA	2	*	*	*	*	*	*	*	8	6	
0 00288	5307-261-0358	STUD, PLAIN: cover plate	EA	2	*	*	*	*	*	*	*	7	7	
0 00289	5307-261-0359	STUD, PLAIN: pipe adapter to discharge valve	EA	2	*	*	*	*	*	*	*	7	4	
0 00290	5307-268-5758	STUD, PLAIN: valve extension	EA	4								7	20	
X2 0 00291	15-013 (81673)	WASHER, FLAT: cover plate and pipe adapter mtg	EA	4								7	3	
X2 0 00292		WASHER, FLAT: suction valve adapter and accumulator mtgEA483 15-013 (81673)												
0 00293	5310-010-3319	WASHER, LOCK: diaphragm weight screw	EA	2	*	*	*	*	*	*	*	7	14	
X2 0 00294		WASHER, LOCK: discharge valve mtg 15-004 (81673)	EA	4								7	21	
X2 0 00295		WASHER, LOCK: suction valve mtg 15-004 (81673)	EA	4								8	18	
X2 0 00296		WEIGHT, DIAPHRAGM: discharge valve, large 3-017 (81673)	EA	1								7	15	
X2 0 00297		WEIGHT, DIAPHRAGM: discharge valve, small 3-016 (81673)	EA	1								7	17	
X2 0 00298		WEIGHT, DIAPHRAGM: large 3-017 (81673)	EA	1								8	13	
				18										

SECTION V

TM 5-4320-222-22P

(1) SMR CODE INDEX NO.	(2) FEDERAL STOCK NUMBER	(3) DESCRIPTION REFERENCE NO. & MFR CODE	(4) UNIT OF MEAS	(5) QTY INC IN UNIT	(6) 30 DAYS DS MAINT ALLOWANCE			(7) 30 DAYS GS MAINT ALLOWANCE			(8) 1-YEAR ALW PER 100 EQUIP CNTGCY	(9) DEPOT MAINT ALW PER 100 EQUIP	(10) ILLUSTRATION		
					(a)	(b)	(c)	(a)	(b)	(c)			(a)	(b)	
					1-20	21-50	51-100	1-20	21-50	51-100			FIGURE NO.	ITEM NO.	
X2 0 00299		WEIGHT, DIAPHRAGM: small 3-016 (81673)	EA	1								8	15		
00300		5507 - PUMP ASSEMBLY													
X2 F 00301		DRIVE ASSEMBLY, PUMPEA15 165-014 (81673)													
P F 00302	3110-100-3690	CONE AND ROLLERS, TAPERED ROLLER BEARING: worm gear, open and closed end 02872 (60038)	EA	2	*	*	2	*	*	2	6	20	5	7	
P F 00303	3110-100-0634	CUP, TAPERED ROLLER BEARING: worm gear, open and closed end 02820 (60038)	EA	2	*	*	2	*	*	2	6	20	5	6	
X2 F 00304		GEAR, WORM: pump cam drive 39-015 (81673)	EA	1									5	19	
X2 F 00305	5315-081-6414	KEY, MACHINE: worm gear to clutch 36-016 (81673)	EA	1									5	18	
P F 00306	5330-154-7560	SEAL, PLAIN ENCASED: worm gear, open end 50604 (76680)	EA	1	*	*	2	*	*	2	10	100	5	17	
00307		5508 - LUBRICATORS													
X2 F 00308		BUSHING, PIPE: case breather 26-081 (81673)	EA	1									5	9	
X2 F 00309		CAP, OIL FILLER 71-013 (81673)	EA	1									5	12	
P 0 00310	4730-287-1649	ELBOW, PIPE: case oil filler	EA	1	*	*	*	*	*	*	2	10	6	17	
X2 F 00311		NIPPLE, PIPE: case breather 26-079 (81673)	EA	1									5	10	
0 00312	4730-196-2054	NIPPLE, PIPE: case oil filler	EA	1	*	*	*	*	*	*	*	*	6	16	
X2 0 00313		OILER: cam drive 49-036 (80885)	EA	1									9	1	
F 00314	5315-839-5822	PIN, COTTER: case breather to pipe nipple	EA	1	*	*	*	*	*	*	*	*	5	11	
				19											

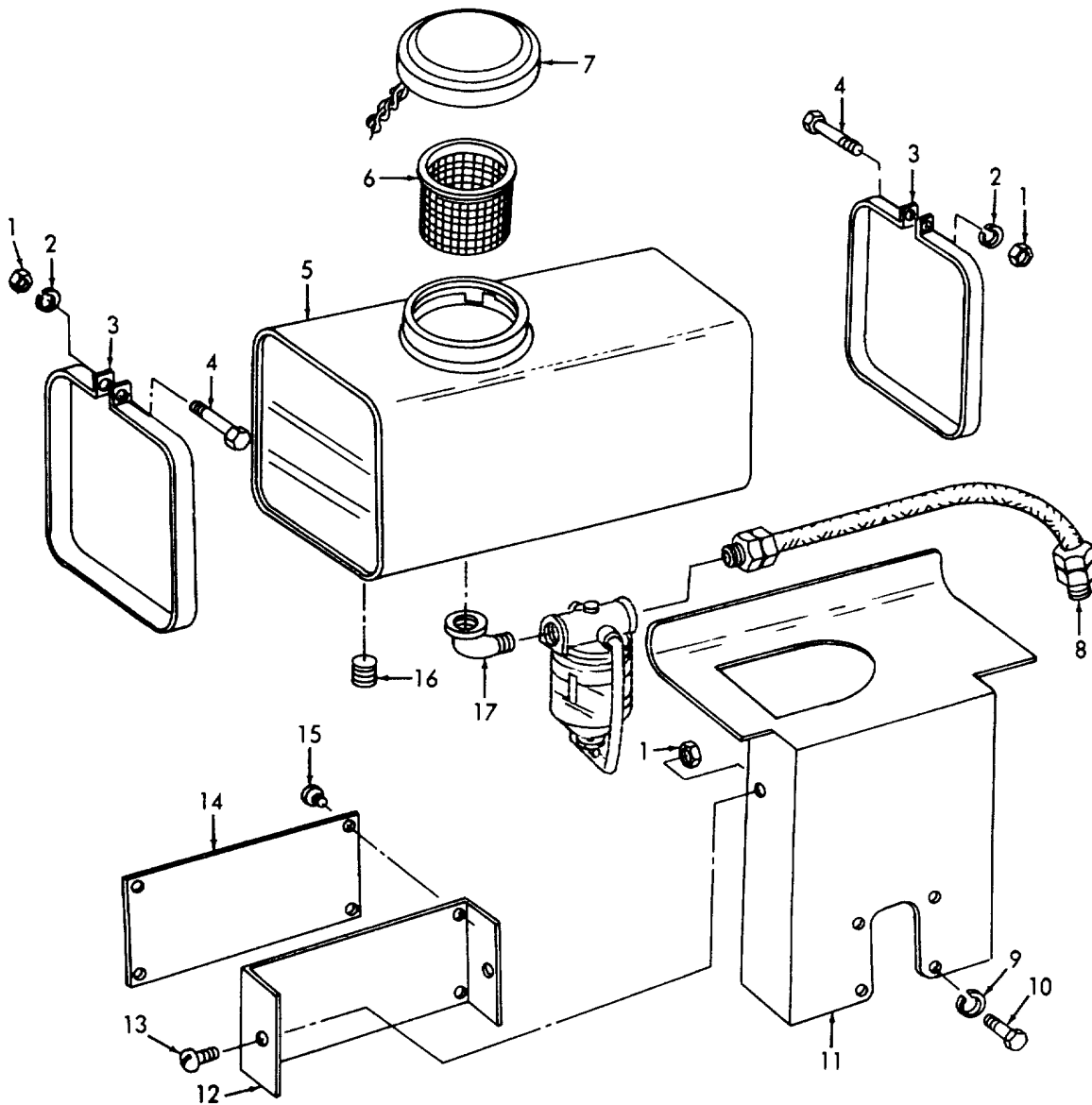


ME 5-4320-222-25P /1

Figure 1. Engine, Brackets, and Clutch Assembly.

INDEX TO PARTS, FIGURE 1

REF NO.	FUNCT GROUP	ITEM NAME	REF NO.	FUNCT GROUP	ITEM NAME
1	0100	WASHER	11	0100	WASHER
2	0100	SCREW	12	0200	LINING
3	0100	NUT	13	0200	SETSCREW
4	0100	SCREW	14	0200	RETAINER
5	0100	WASHER	15	0200	SPRING
6	0100	BRACKET	16	0200	SETSCREW
7	0100	ENGINE	17	0200	HOUSING
8	0100	SHIM	18	0100	SCREW
9	0100	BRACKET	19	0200	KEY
10	0100	BOLT			

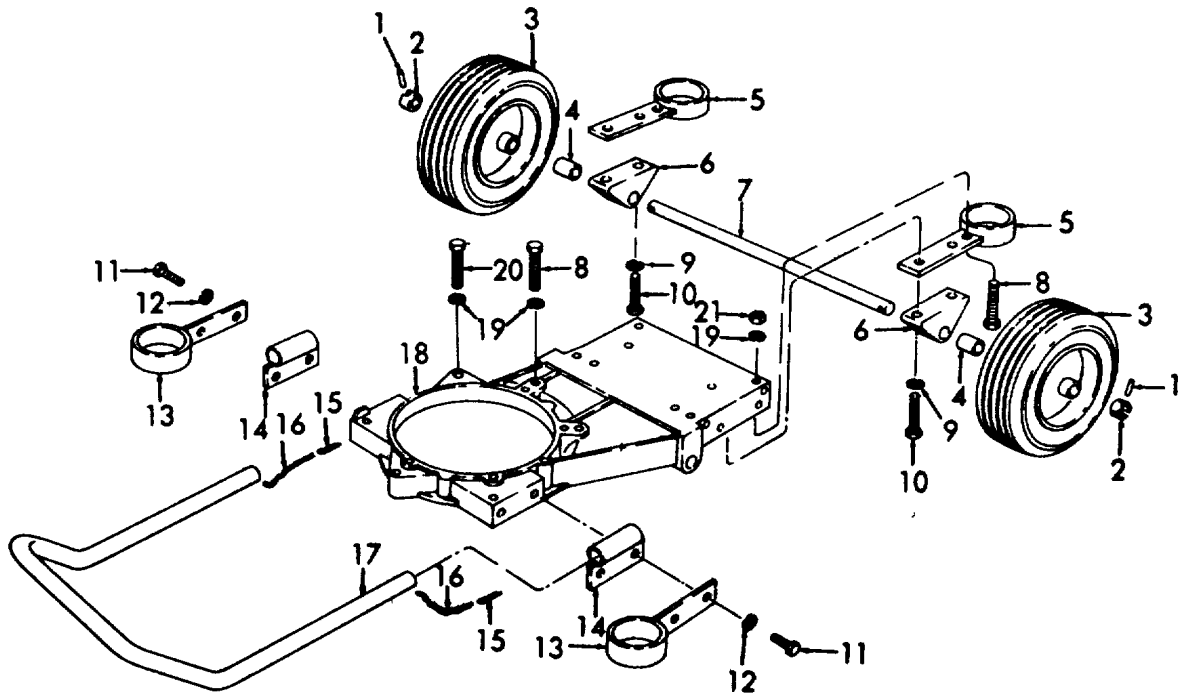


ME 5-4320-222-25P /2

Figure 2. Fuel Tank Assembly and Identification Plate.

INDEX TO PARTS, FIGURE 2

REF NO.	FUNCT GROUP	ITEM NAME	REF NO.	FUNCT GROUP	ITEM NAME
1	0306	NUT	9	0306	WASHER
1	2210	NUT	10	0306	BOLT
2	0306	WASHER	11	0306	BRACKET
3	0306	STRAP	12	2210	BRACKET
4	0306	SCREW	13	2210	SCREW
5	0306	TANK	14	2210	PLATE
6	0306	STRAINER	15	2210	SCREW
7	0306	CAP	16	0306	PLUG
8	0306	HOSE AY	17	0306	ELBOW

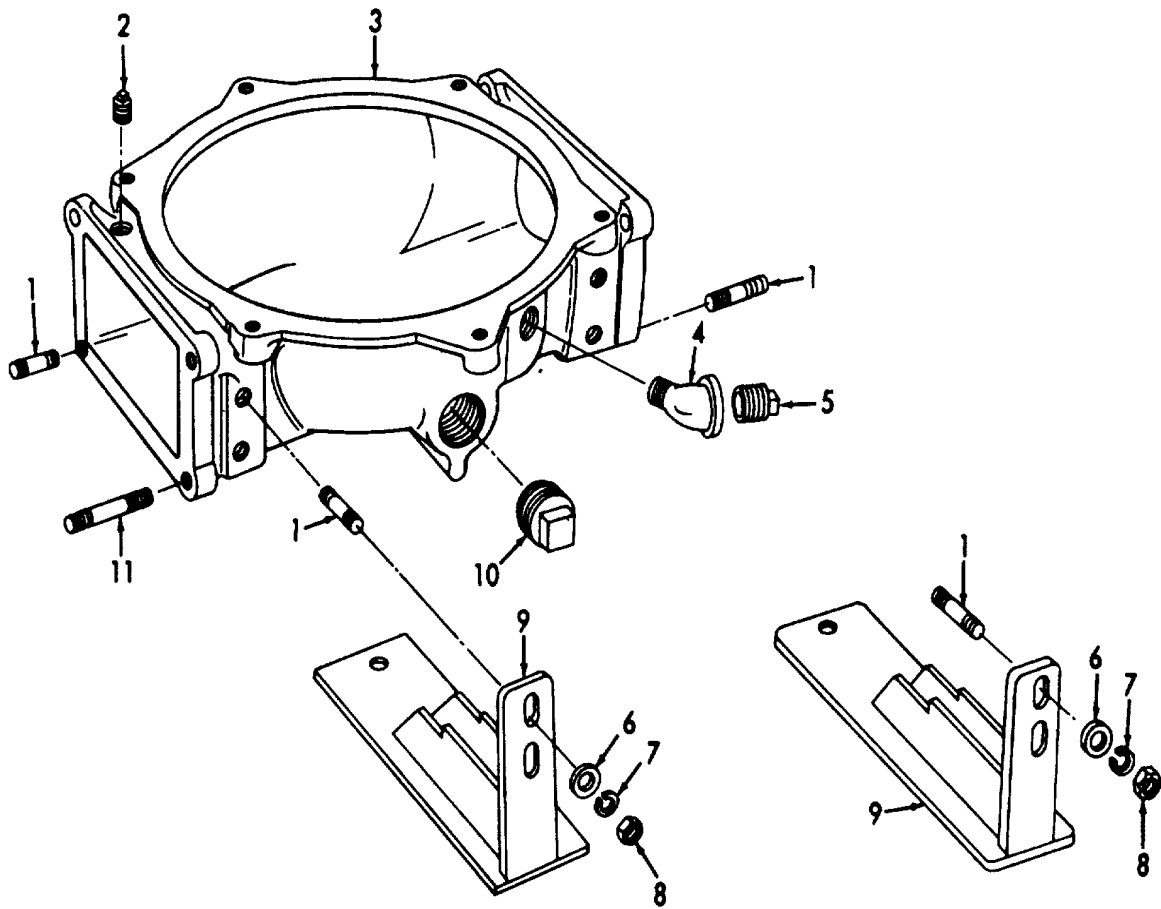


ME 5-4320-222-25P /3

Figure 3. Frame, Hold Downs, Handle, and Wheels.

INDEX TO PARTS, FIGURE 3

REF NO.	FUNCT GROUP	ITEM NAME	REF NO.	FUNCT GROUP	ITEM NAME
1	1311	PIN	12	1501	WASHER
2	1311	CAP	13	1501	HOLD DOWN
3	1311	WHEEL	14	1501	SLEEVE
4	1101	SLEEVE	15	1501	PIN
5	1501	HOLD DOWN	16	1501	CHAIN
6	1101	BRACKET	17	1501	HANDLE
7	1101	AXLE	18	1501	FRAME
8	1501	SCREW	19	1501	WASHER
9	1101	WASHER	20	1501	SCREW
10	1101	BOLT	21	1501	NUT
11	1501	SCREW			

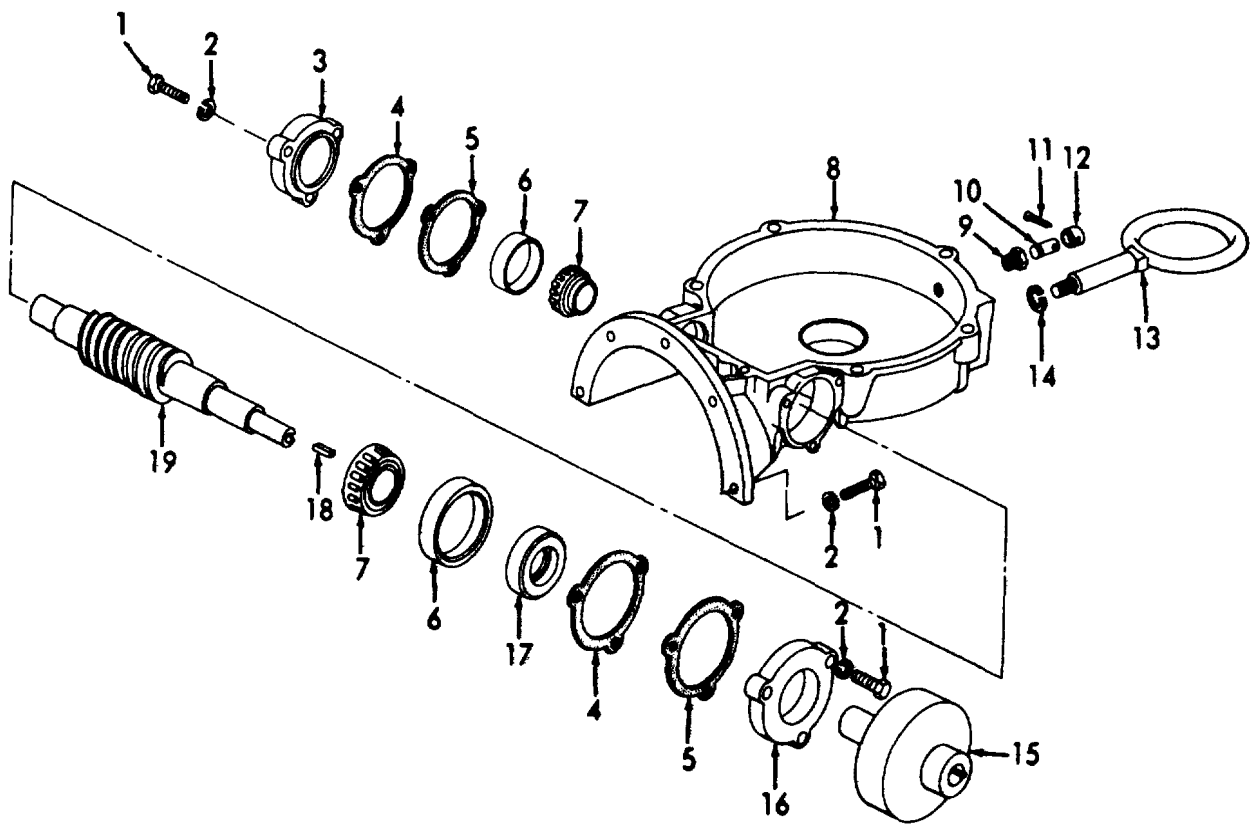


ME 5-4320-222-25P /4

Figure 4. Pump Bowl, Fittings, and Stands.

INDEX TO PARTS, FIGURE 4

REF NO.	FUNCT GROUP	ITEM NAME	REF NO.	FUNCT GROUP	ITEM NAME
1	5500	STUD	7	1507	WASHER
2	5500	PLUG	8	1507	NUT
3	5500	BOWL	9	1507	STAND
4	5500	ELBOW	10	5500	PLUG
5	5500	PLUG	11	5500	STUD
6	1507	WASHER			

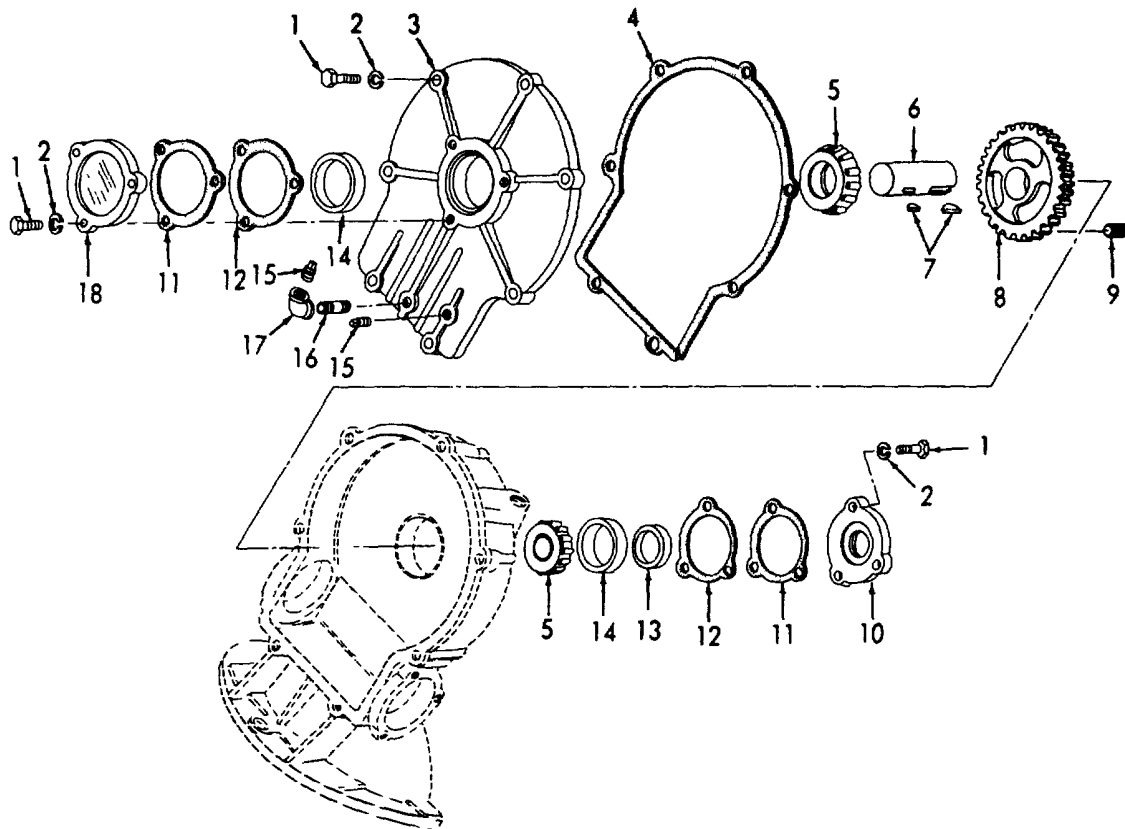


ME 5-4320-222-25P /5

Figure 5. Drive Assembly, Oil Breather, and Lifting Bolt.

INDEX TO PARTS, FIGURE 5

REF NO.	FUNCT GROUP	ITEM NAME	REF NO.	FUNCT GROUP	ITEM NAME
1	5500	BOLT	11	5508	PIN
2	5500	WASHER	12	5508	CAP
3	5500	COVER	13	5500	BOLT
4	5500	GASKET	14	5500	WASHER
5	5500	GASKET	15	0200	COUPLING
6	5507	CUP	16	5500	COVER
7	5507	CONE AND ROLLERS	17	5507	SEAL
8	5500	CASE	18	5507	KEY
9	5508	BUSHING	19	5507	GEAR
10	5508	NIPPLE			

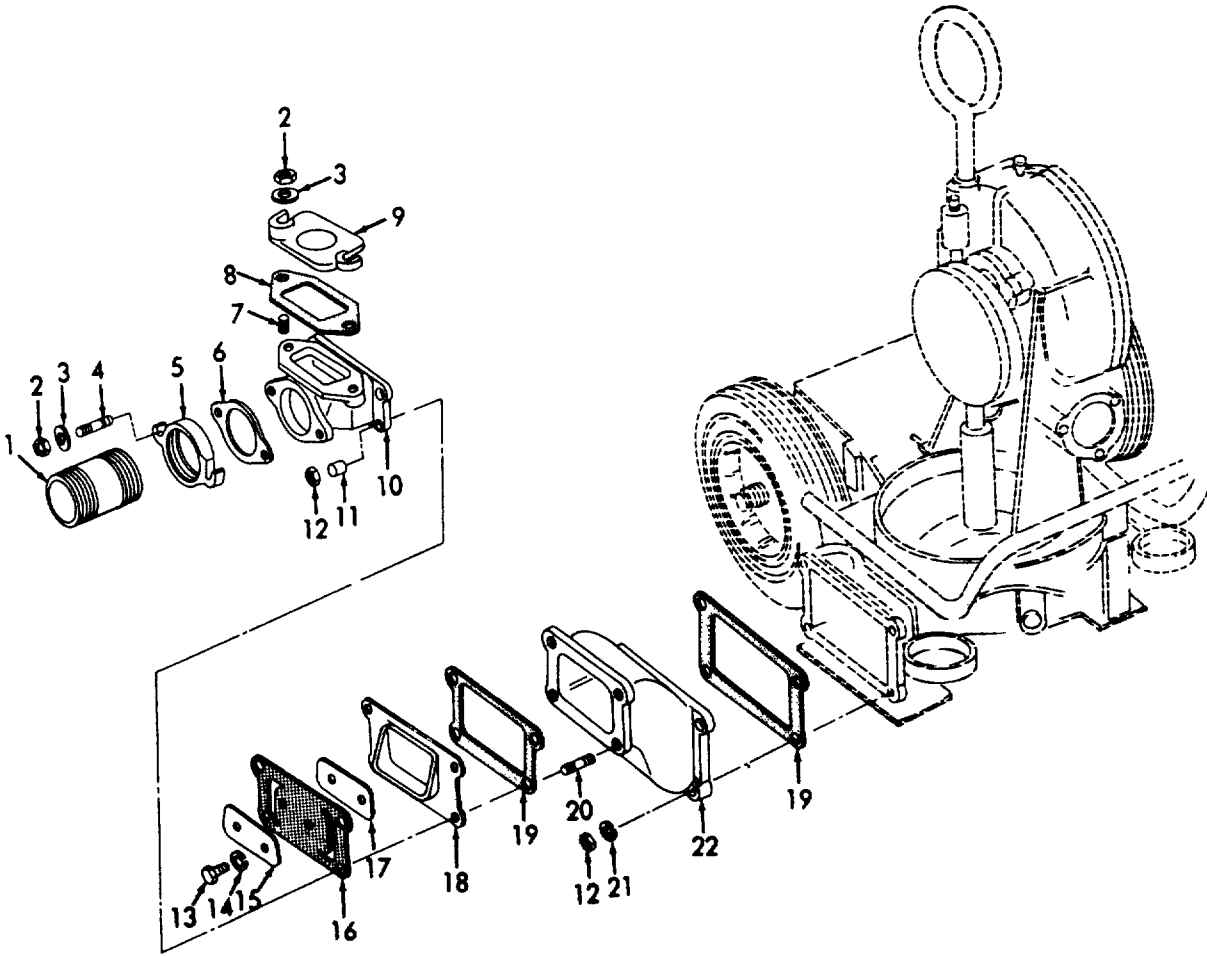


ME 5-4320-222-25P /6

Figure 6. Cam Gear, Case Cover, and Bearing Covers.

INDEX TO PARTS, FIGURE 6

REF NO.	FUNCT GROUP	ITEM NAME	REF NO.	FUNCT GROUP	ITEM NAME
1	5500	BOLT	10	5500	COVER
2	5500	WASHER	11	5500	GASKET
3	5500	COVER	12	5500	GASKET
4	5500	GASKET	13	5501	SEAL
5	5501	CONE AND ROLLERS	14	5501	CUP
6	5501	SHAFT	15	5508	PLUG
7	5501	KEY	16	5508	NIPPLE
8	5501	GEAR	17	5508	ELBOW
9	5501	SETSCREW	18	5500	COVER

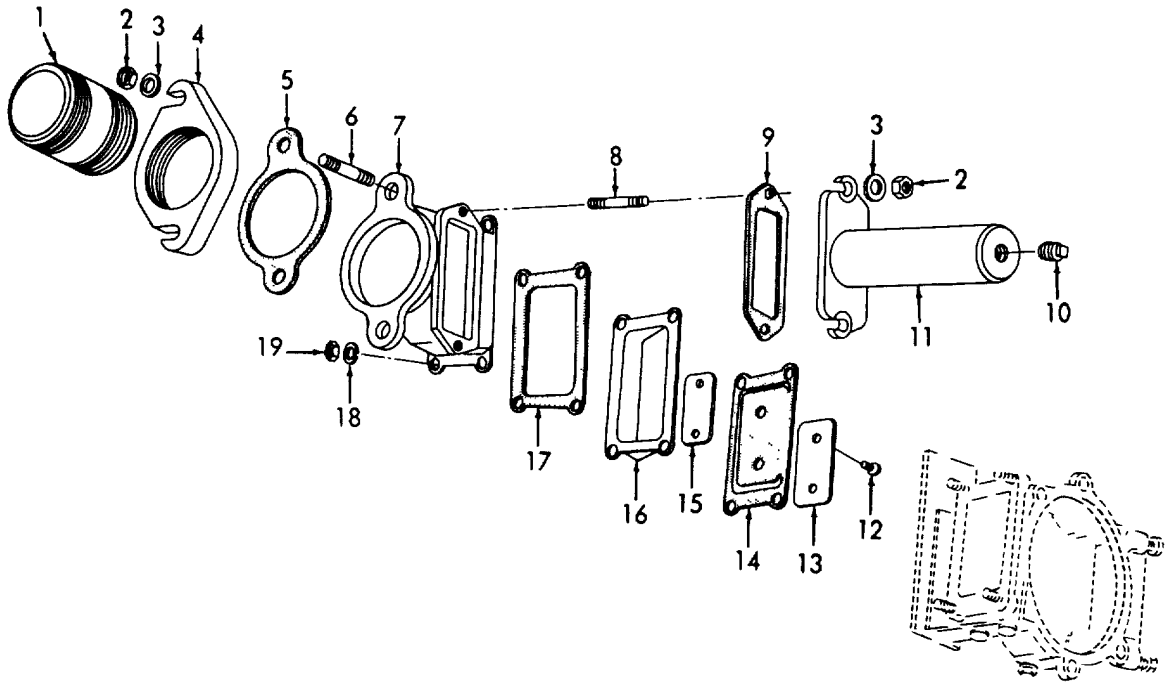


ME 5-4320-222-25P 17

Figure 7. Discharge Valve.

INDEX TO PARTS, FIGURE 7

REF NO.	FUNCT GROUP	ITEM NAME	REF NO.	FUNCT GROUP	ITEM NAME
1	5505	NIPPLE	12	5505	NUT
2	5505	NUT	13	5505	SCREW
3	5505	WASHER	14	5505	WASHER
4	5505	STUD	15	5505	WEIGHT
5	5505	ADAPTER	16	5505	GASKET
6	5505	GASKET	17	5505	WEIGHT
7	5505	STUD	18	5505	SEAT
8	5505	GASKET	19	5505	GASKET
9	5505	COVER	20	5505	STUD
10	5505	BODY	21	5505	WASHER
11	5505	SPACER	22	5505	EXTENSION

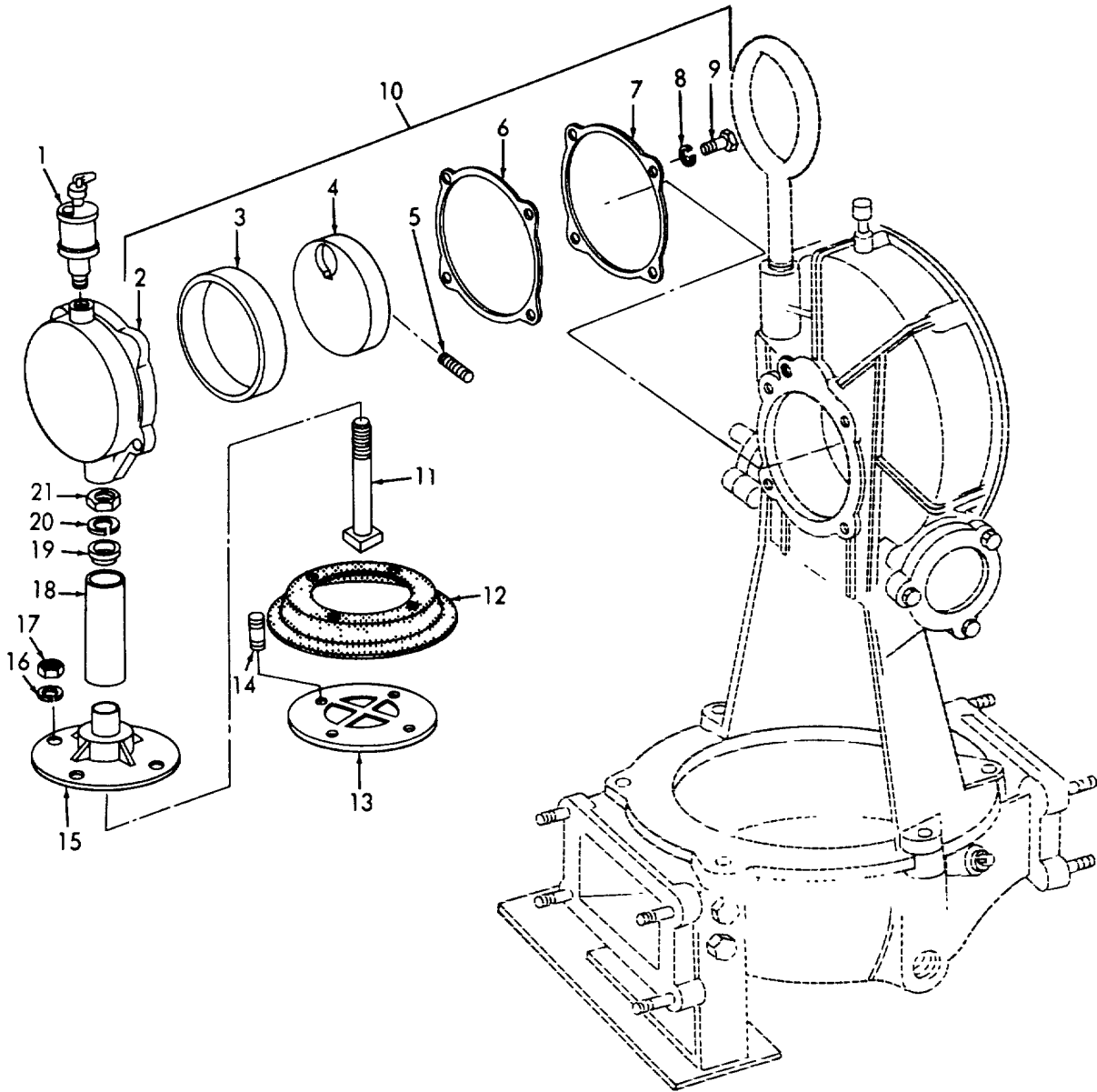


ME 5-4320-222-25P /8

Figure 8. Suction Valve.

INDEX TO PARTS, FIGURE 8

REF NO	FUNCT GROUP	ITEM NAME	REF NO	FUNCT GROUP	ITEM NAME
1	5505	NIPPLE	11	5505	ACCUMULATOR
2	5505	NUT	12	5505	SCREW
3	5505	WASHER	13	5505	WEIGHT
4	5505	ADAPTER	14	5505	GASKET
5	5505	GASKET	15	5505	WEIGHT
6	5505	STUD	16	5505	SEAT
7	5505	BODY	17	5505	GASKET
8	5505	STUD	18	5505	WASHER
9	5505	GASKET	19	5505	NUT
10	5505	PLUG			



ME 5-4320-222-25P /9

Figure 9. Cam Assembly and Diaphragm.

INDEX TO PARTS, FIGURE 9

REF NO	FUNCT GROUP	ITEM NAME	REF NO	FUNCT GROUP	ITEM NAME
1	5508	OILER	12	5502	DIAPHRAGM
2	5501	HOUSING	13	5502	PLATE
3	5501	RING CAM	14	5502	STUD
4	5501	CAM	15	5502	PLATE
5	5501	SETSCREW	16	5502	WASHER
6	5501	GASKET	17	5502	NUT
7	5501	RING	18	5502	SPACER
8	5501	WASHER	19	5502	WASHER
9	5501	SCREW	20	5502	WASHER
10	5501	CAM AY	21	5502	NUT
11	5502	CNCTG ROD AY			

**SECTION VII. INDEX-FEDERAL STOCK NUMBER AND REFERENCE NUMBER
CROSS-REFERENCE TO INDEX NUMBER**

<u>STOCK NUMBER</u>	<u>INDEX NUMBER</u>	<u>STOCK NUMBER</u>	<u>INDEX NUMBER</u>
2520-852-5886	00004	4730-202_9381	00148
2520D52-5886	00137	4730-256-7130	00082
2805-714-8553	00123	4730-256-7130	00083
2910-293-5923	00019	4730-256-7130	00273
2910-293-5923	00152	4730-256-7130	00274
3110-100-0355	00239	4730-263-3124	00062
3110-100-0634	00303	4730-263-3124	00221
3110-100-0728	00238	4730-278-3353	00061
3110-100-3690	00302	4730-278-3353	00088
4320-593-2480	00247	4730-278-3353	00220
4320-733-7860	00075	4730-278-3353	00279
4320-733-7860	00076	4730-278-4285	00059
4320-733-7860	00266	4730-278-4285	00213
4320-733-7860	00267	4730-287-1649	00020
4320-733-7861	00006	4730-287-1649	00110
4320-733-7861	00139	4730-287-1649	00153
4320-733-7863	00074	4730-287-1649	00310
4320-733-7863	00077	4730-289-5176	00060
4320-733-7863	00265	4730-289-5176	00219
4320-733-7863	00268	5305-010-2601	00236
4320-733-7864	00080	5305-013-9325	00009
4320-733-7864	00081	5305-013-9325	00142
4320-733-7864	00271	5305-068-0501	00089
4320-733-7864	00272	5305-068-0501	00090
4320-733-7865	00217	5305-068-0501	00280
4320-734-5101	00010	5305-068-0501	00281
4320-734-5101	00143	5305-068-0509	00235
4320-840-3990	00216	53054-698495	00023
4320-840-3991	00215	5305-0698495	00156
4320-840-3992	00214	5305-071-1315	00055
4320-840-3993	00218	5305-071-1315	00200
4320-891-5437	00231	5305-071-2241	00185
4320-891-5438	00078	5305-225-3839	00126
4320-891-5438	00079	5305-253-5614	00199
4320-891-5438	00269	5305-269-3213	00125
4320-891-5438	00270	5305-269-3217	00183
4320-901-1094	00233	5305-269-3230	00127
4320-901-1095	00230	5305-724-6809	00243
4320-938-8072	00222	5305-728-274	00008
4320-984-4748	00003	5305-728-274	00141
4320-984-4748	00136	5306-225-8497	00013
4320-999-5538	00244	5306-225-8497	00120
4320-999-5912	00232	5306-225-8497	00146
4320-999-5998	00007	5306-225-9081	00032
4320-999-5998	00140	5306-225-9081	00165
4710-278-5380	00094	5307-261-0358	00096
4710-278-5380	00117	5307-261-0358	00097
4710-278-5380	00285	5307-261-0358	00287
4710-278-5380	00319	5307-261-0358	00288
4720-289-5213	00016	5307-261-0359	00098
4720-289-5213	00116	5307-261-0359	00289
4720-289-5213	00149	5307-268-5755	00064
4720-289-5213	00318	5307-268-5755	00224
4720-733-7862	00014	5307-268-5755	00253
4720-733-7862	00147	5307-268-5758	00099
4730-187-4200	00113	5307-268-5758	00290
4730-187-4200	00315	5307-268-5760	00063
4730-196-2054	00111	5307-268-5760	00223
4730-196-2054	00312	5307-275-5329	00095
4730-202-9381	00015	5307-275-5329	00286

**SECTION VII INDEX-FEDERAL STOCK NUMBER AND REFERENCE NUMBER
CROSS-REFERENCE TO INDEX NUMBER (Continued)**

<u>STOCK NUMBER</u>	<u>INDEX NUMBER</u>	<u>STOCK NUMBER</u>	<u>INDEX NUMBER</u>
5310-010-3319	00027	5310-655-9544	00047
5310-010-3319	00102	5310-655-9544	00085
5310-010-3319	00160	5310-655-9544	00087
5310-010-3319	00188	5310-655-9544	00124
5310-010-3319	00237	5310-655-9544	00181
5310-010-3319	00293	5310-655-9544	00190
5310-010-3325	00065	5310-655-9544	00249
5310-010-3325	00226	5310-655-9544	00276
5310-010-3327	00255	5310-655-9544	00278
5310-012-0214	00028	5310-682-5756	00084
5310-012-0214	00161	5310-682-5756	00086
5310-012-0379	00035	5310-682-5756	00275
5310-012-0379	00168	5310-682-5756	00277
5310-017-4916	00132	5315-043-1787	00005
5310-017-8537	00131	5315-043-1787	00138
5310-017-8556	00133	5315-081-6414	00305
5310-045-1419	00248	5315-187-9538	00045
5310-087-7493	00049	5315-187-9538	00182
5310-087-7493	00192	5315-822-9460	00039
5310-261-7340	00256	5315-822-9460	00172
5310-619-3555	00021	5315-839-5822	00314
5310-619-3555	00054	5330-178-3806	00242
5310-619-3555	00154	9905-807-3712	00198
5310-619-3555	00197		

<u>REFERENCE NO.</u>	<u>RFG CODE</u>	<u>INDEX NO.</u>	<u>REFERENCE NO.</u>	<u>MFG CODE</u>	<u>INDEX NO.</u>
A3789	87134	00006	15-004	81673	00104
A3789	87134	00139	15-004	81673	00187
A3803	87134	00010	15-004	81673	00193
A3803	87134	00143	15-004	81673	00294
XA2629	87134	00003	15-004	81673	00295
XA2629	87134	00136	15-013	81673	00100
02820	60038	00303	15-013	81673	00101
02872	60038	00302	15-013	81673	00291
10-045	81673	00177	15-013	81673	00292
11-034	81673	00031	15-045	81673	00254
11-034	81673	00164	165-014	81673	00301
12-015	81673	00048	17-033	81673	00040
12-015	81673	00191	17-033	81673	00173
125-020	81673	00180	173-004	81673	00017
125-021	81673	00179	173-004	81673	00150
13-031	81673	00128	174-052	81673	00222
13-032	81673	00129	2AO16-2	81336	00123
13-033	81673	00330	22-002	81673	00058
14-025	81673	00044	22-002	81673	00203
14-025	81673	00178	24-061	81673	00217
146-003	81673	00229	24-062	81673	00214
147-001	81673	00246	24-066	81673	00216
15-003	81673	00225	24-069	81673	00078
15-003	81673	00227	24-069	81673	00079
15-004	81673	00050	24-069	81673	00269
15-004	81673	00103	24-069	81673	00270

**SECTION VII INDEX-FEDERAL STOCK NUMBER AND REFERENCE NUMBER
CROSS-REFERENCE TO INDEX NUMBER (Continued)**

<u>REFERENCE NO.</u>	<u>MFG CODE</u>	<u>INDEX NO.</u>	<u>REFERENCE NO.</u>	<u>MFG CODE</u>	<u>INDEX NO.</u>
24-072	81673	00075	39-014	81673	00240
24-072	81673	00076	39-015	81673	00304
24-072	81673	00266	4043-3	87134	00004
24-072	81673	00267	4043-3	87134	00137
24-073	81673	00080	44-010	81673	00184
24-073	81673	00081	44-014	81673	00204
24-073	81673	00271	44-014	81673	00205
24-073	81673	00272	46-008	81673	00230
24-076	81673	00218	4746	87134	00007
24-77	81673	00215	4746	87134	00140
24-099	81673	00074	49-36	80885	00112
24-099	81673	00077	49-036	80885	00313
24-099	81673	00265	5-060	81673	00070
24-099	81673	00268	5-060	81673	00071
24-105	81673	00231	5-060	81673	00261
25-084	81673	00033	5-60	81673	00262
25-084	81673	00166	50165	76680	00242
25-088	81673	00018	50604	76680	00306
25-088	81673	00151	51-084	81673	00250
25-089	81673	00121	51-85	81673	00251
25-090	81673	00122	54-042	81673	00244
25-091	81673	00053	55-012	81673	00207
25-091	81673	00196	56-009	81673	00014
2523	60038	00239	56-	81673	00147
2580	60038	00238	6-022	81673	00212
26-019	81673	00022	6-023	81673	00211
26-079	81673	00311	6_027	81673	00210
26-081	81673	00308	6-028	81673	00208
26-109	81673	00155	6-029	81673	00209
293011	08645	00019	6-054	81673	00072
293011	08645	00152	6-054	81673	00263
293026	08645	00024	60-037	81673	00234
293026	08645	00157	65-036	81673	00232
294002-4	08645	00026	67-022	81673	00068
294002-4	08645	00159	67-022	81673	00069
3-016	81673	00106	67-022	81673	00259
3-016	81673	00108	67-022	81673	00260
3-016	81673	00297	69-011	81673	00091
3-016	81673	00299	69-011	81673	00092
3-017	81673	00105	69-011	81673	00282
3-017	81673	00107	69-011	81673	00283
3-017	81673	00296	69-018	81673	00073
3-017	81673	00298	69-018	81673	00264
3E	24161	00247	71-007	81673	00038
34-060	81673	00067	71-007	81673	00171
34-060	81673	00258	71-013	81673	00309
34-063	81673	00206	72-004	81673	00025
36-016	81673	00305	72-004	81673	00158
36-017	81673	00241	81-013	81673	00252
37-065	81673	00043	9-056	81673	00186
37-065	81673	00176	9-057	81673	00034
38-013	81673	00233	9-057	81673	00167

By Order of the Secretary of the Army:

Official:

KENNETH G. WICKHAM,
*Major General, United States Army,
The Adjutant General.*

W. C. WESTMORELAND,
*General, United States Army,
Chief of Staff.*

Distribution :

To be distributed in accordance with DA Form 12-25, Section I (qty rqr block no 246) organizational maintenance requirements for Pumps, Centrifugal, Petroleum.

*U S GOVERNMENT PRINTING OFFICE: 1995 - 388-421/02621

RECOMMENDED CHANGES TO EQUIPMENT TECHNICAL PUBLICATIONS



THEN... JOT DOWN THE DOPE ABOUT IT ON THIS FORM, CAREFULLY TEAR IT OUT, FOLD IT AND DROP IT IN THE MAIL!

SOMETHING WRONG WITH THIS PUBLICATION?

FROM: (PRINT YOUR UNIT'S COMPLETE ADDRESS)

DATE SENT

PUBLICATION NUMBER

PUBLICATION DATE

PUBLICATION TITLE

BE EXACT... PIN-POINT WHERE IT IS

PAGE NO.

PARA-GRAPH

FIGURE NO.

TABLE NO.

IN THIS SPACE TELL WHAT IS WRONG AND WHAT SHOULD BE DONE ABOUT IT:

TEAR ALONG PERFORATED LINE

PRINTED NAME, GRADE OR TITLE, AND TELEPHONE NUMBER

SIGN HERE:

DA FORM 2028-2 JUL 79

PREVIOUS EDITIONS ARE OBSOLETE.

P.S.—IF YOUR OUTFIT WANTS TO KNOW ABOUT YOUR RECOMMENDATION MAKE A CARBON COPY OF THIS AND GIVE IT TO YOUR HEADQUARTERS.

TM 5-4320-222-25P PUMP, RECIPROCATING: DIAHRAGM; GASOLINE - 1968

PIN : 008457-000